



LEGEND

- Villa
- Terrace
- Communal House
- Facilities & Studio Apartments

OUR CONCEPT

Large central hub (the Green) + Detached villas & sport activities + Additional new housing typologies & communal facilities

ADAPTABILITY TO CONTEXT

The Green can be round...
...oblong...
...or any other shape!
...depending on the typography of the site

WHY?

We are inspired by the quintessentially British Village Green, the ubiquitous City Squares, and the luscious Communal Gardens to be found in the centre of the large Notting Hill and Maida Vale residential blocks.

We are also inspired by the innumerable international historic examples of bold formal public spaces surrounded by residential architecture. All are masterpieces in their relationships of architecture and landscape, and provide unforgettable, much loved, timeless spaces and places.

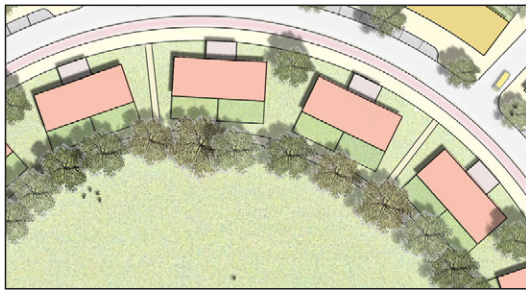
Highbury Fields, London	Place des Vosges, Paris
Royal Crescent, Bath	Palais Royal, Paris



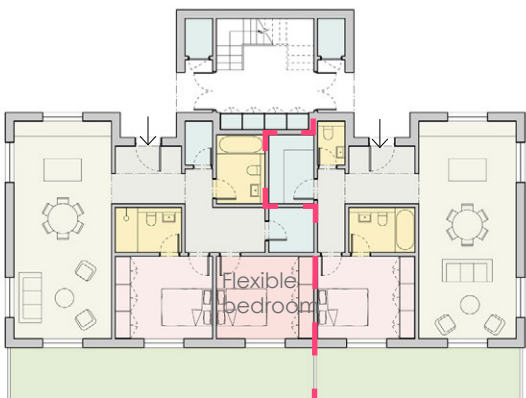
OUR FURTHER AIMS

1. To create a transgenerational community that counters the boredom and isolation typical of suburban developments, by physically facilitating social interaction and by providing ideal housing for all segments of society.
2. To provide facilities for modern day living that are easily accessible and affordable for all.
3. To attract outsiders from adjacent local communities, increasing density and diversity.
4. To encourage walking and cycling, by creating avenues and streets that are beautifully landscaped and easy to maintain
5. To provide an abundance of different private, semi-private and public spaces in which to be creative, to be social, to be fully at home.

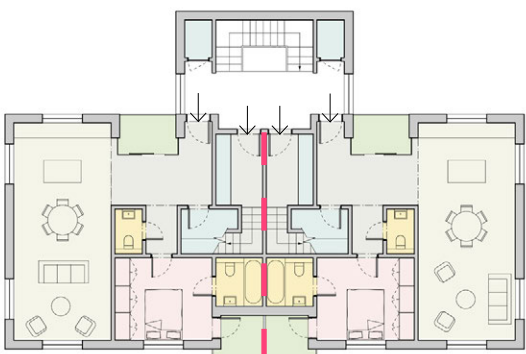
Villa



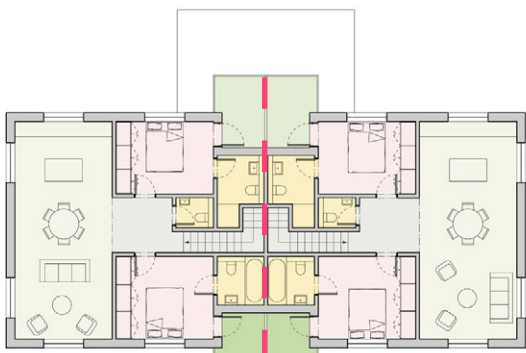
Villa Type 1



Ground Floor Plan
FLAT 1: 2 bed (94 sq m) FLAT 2: 1 bed (72 sq m)



First Floor Plan
FLAT 3: 1 bed (70 sq m) FLAT 4: 1 bed (70 sq m)

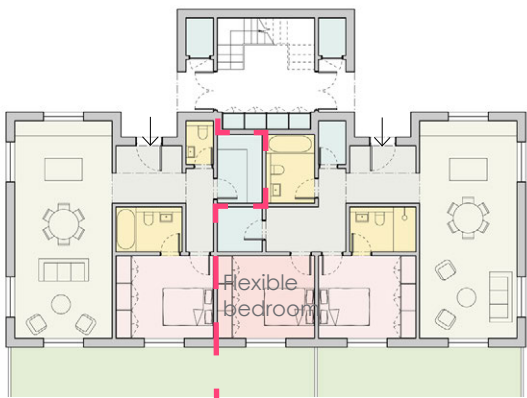


Second Floor Plan
FLAT 5: 2 bed (89 sq m) FLAT 6: 2 bed (89 sq m)

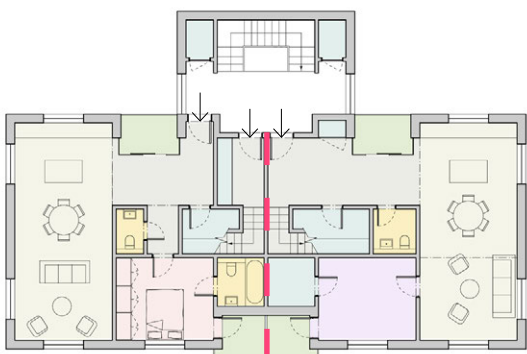


Villa Type 1 Section
Flexible bedroom

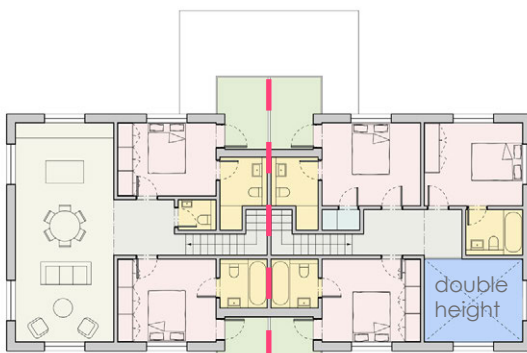
Villa Type 2



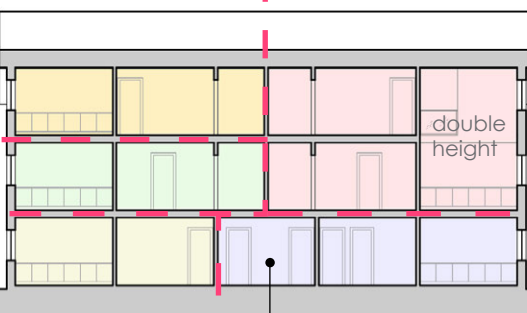
Ground Floor Plan
FLAT 1: 1 bed (72 sq m) FLAT 2: 2 bed (94 sq m)



First Floor Plan
FLAT 3: 1 bed (70 sq m) FLAT 4 (duplex): 3 bed (148 sq m)

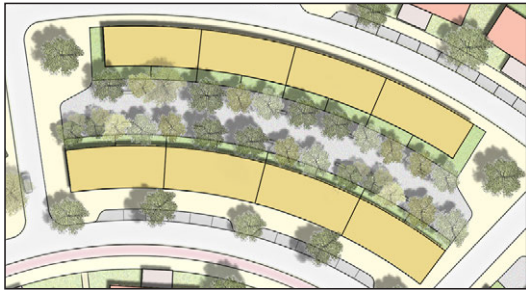


Second Floor Plan
FLAT 5: 2 bed (89 sq m) FLAT 4 (duplex): 3 bed (160 sq m)

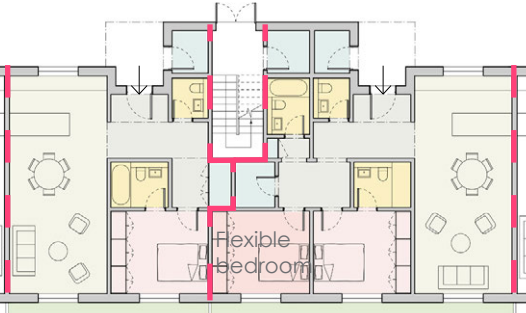


Villa Type 2 Section
Flexible bedroom

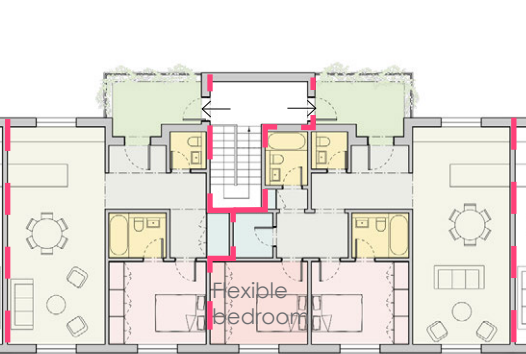
Terrace



Communal House



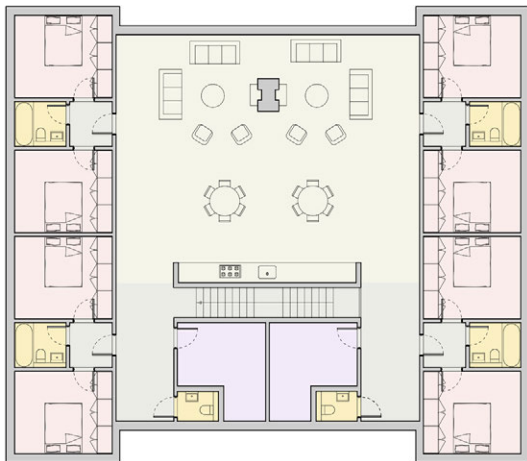
Ground Floor Plan
FLAT 1: 1 bed (69 sq m) FLAT 2: 2 bed (93 sq m)



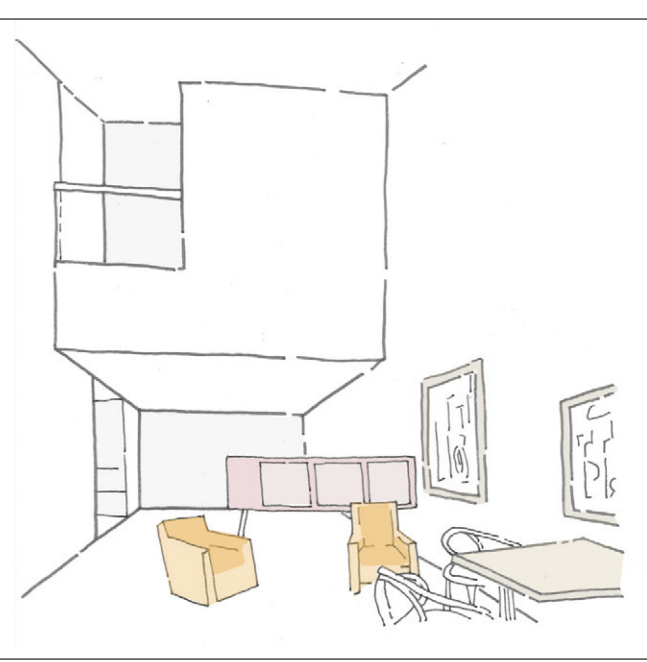
First Floor Plan/ Second Floor Plan
FLAT 3: 1 bed (69 sq m) FLAT 4: 2 bed (93 sq m)



Ground Floor Plan
Total area: 330 sq m



First Floor Plan
Total area: 330 sq m

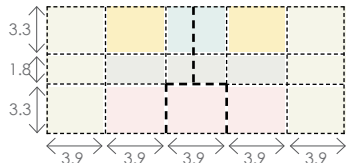


LEGEND

- Bedroom
- Bathroom
- Living / Kitchen
- Circulation
- Storage
- Study

OUR CONCEPT

MODULAR



- Efficient construction
- Modular room sizes throughout
- Allows for future flexibility
- Cost effective
- Generous flats & houses

FLEXIBILITY



Central rooms can be incorporated laterally in either adjacent unit

Option of extra bedroom or a double height living space

MATERIALS

Materials should reflect the location and context of each development, while maintaining a stylistic communality.

Use of natural, vernacular materials would help ensure that the architecture 'fits in' while improving the carbon footprint of the scheme.

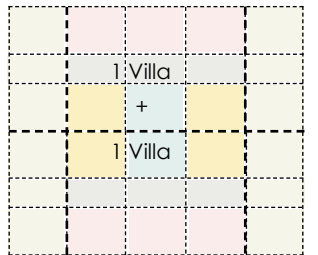
Indigenous materials such as brick and flint, Bath stone and Cumbrian slate, characteristic of specific regions within the UK, would be used as feature elements within an otherwise economical building fabric.

CO-HABITATION

Communal houses for groups of people who want shared facilities and to benefit from communal living while still retaining a degree of privacy.

This type of living may appeal to the following demographic groups:

- Single adults
- Young
- Elderly
- Single parents
- Young professionals



= Communal House

GENEROUS FLATS & HOUSES

The space allowances provided are more generous than standard urban residences, to meet the suburban tradition and expectations.

Unit sizes (GIA):	Room sizes:
1 bedroom: 65-70 sqm	Bathrooms: 5 sqm
2 bedroom: 88-95 sqm	Bedroom: 13 sqm
3 bedroom: 150 sqm	Living: 35 sqm

