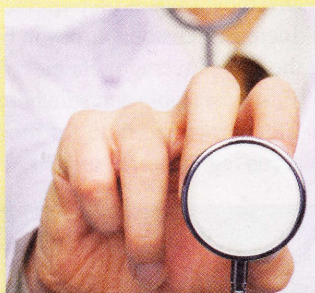


Can you guess what this  
weird and wonderful  
**mystery medical object** is?

PAGE 8

## WHAT'S ONLINE



Show your support for  
the BMA's **Your GP cares**  
campaign

[bma.org.uk/yourgpcares](http://bma.org.uk/yourgpcares)



Read all the news from the

**BMA junior doctors  
conference**

[bma.org.uk/](http://bma.org.uk/juniorsconference)

[juniorsconference](http://bma.org.uk/juniorsconference)



## Lack of time hinders collaboration

GPs say workload pressures and lack of time are preventing them from exploring collaborative ways of working, a BMA survey reveals.

The BMA GPs committee asked GPs for their views about different practices coming together to pool resources and plan primary care services. The survey results come a week after the GPC launched its Your GP cares campaign highlighting the strains general practice is under from rising workload and falling resources.

Its findings include:

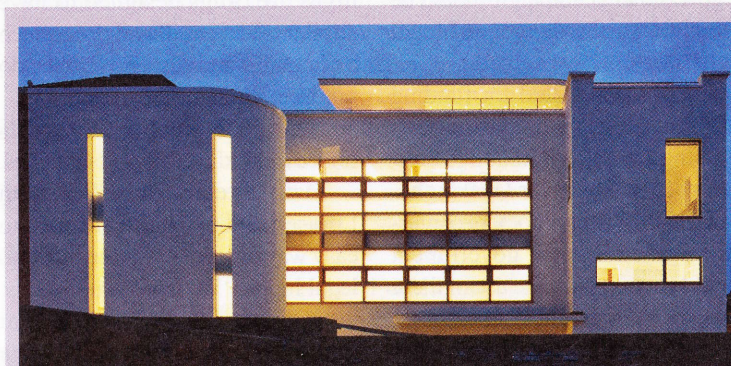
- Seven out of 10 GPs in England say workload pressures are a barrier to them forming federations or networks
- In Northern Ireland, a similar number — two-thirds of respondents — cited workload pressures as a barrier
- Workload pressures were also a

reason for two in five GPs in Scotland, and two in five in Wales, not pursuing a federation or network.

GPC deputy chair Richard Vautrey said: 'In this environment, we do need to look at new ways of working that might enable practices to get the most out of limited resources and work more effectively together. Forming federations or networks is certainly not the solution for every practice and there is no "one-size-fits-all" model, but it could offer opportunities for many practices in difficult situations.

'It is disappointing that the problems that are spurring the need for more collaborative working are preventing GP practices from putting in place proper solutions. As this survey shows, many GP practices simply do not have the time to explore the benefits of federations.'

- Read the results at [bma.org.uk/gpc](http://bma.org.uk/gpc)



**FIT FOR PURPOSE:** An old office block has been transformed into what is believed to be the UK's largest single-site GP practice in the UK.

Wokingham Medical Centre in Berkshire, designed by Barbara Weiss Architects, can accommodate 16 GPs and 10 nurses and includes physiotherapy, phlebotomy and a flexible medical suite.

GP partner Vipan Bhardwaj said: 'The practice has shown beyond doubt that medical spaces can be fit for purpose without being bland.'

Doctors and their practice team will be better equipped to deliver the full range of care their patients need at this new surgery. This is an example of the fit for future premises that the Your GP cares campaign is calling for.

GPs feared their previous premises were too small, would fail a Care Quality Commission inspection, and would be unable to meet predicted patient growth or moves to relocate hospital services into the community.

## Retirement crisis undermines general practice

A new survey reveals the scale of the GP workforce crisis that helped to spark a major BMA campaign. More than one in five GPs say they plan to retire earlier than planned.

The majority of these doctors say workload pressures are behind their decision.

The survey by Wessex local medical committee, answered by 1,400 GPs, also reveals the recruitment problems faced by over-stretched

practices. Nearly 70 per cent of practices have had a GP vacancy in the last year and 28 per cent of these practices were unable to fill the post.

The BMA GPs committee says the LMC's findings demonstrate why the new Your GP cares campaign is necessary.

GPC deputy chair Richard Vautrey said: 'These stark findings provide yet more evidence that we have been receiving from areas up

and down the country that general practice is in crisis.

'They echo those of our own survey, published earlier this year, which found two-thirds of GPs were considering early retirement as they struggled with heavy workloads and low morale. This is also discouraging young doctors choosing general practice as a career.'

Your GP cares, launched earlier this month, calls for long-term,

sustainable funding to tackle the huge pressures facing general practice.

Dr Vautrey added: 'All GPs can take part in our campaign using the resources we're providing, which will help patients to understand that practices not only in Wessex but around the country are facing a workload and workforce crisis which requires urgent action.'

- Visit [bma.org.uk/yourgpcares](http://bma.org.uk/yourgpcares)