

Wokingham Medical Centre, Berkshire

Internal wall and ceiling

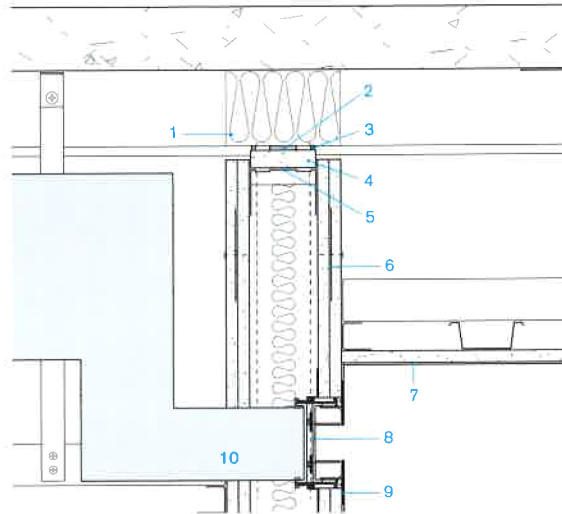
by Barbara Weiss Architects



There are two notable features of this detail, from what may turn out to be Britain's largest single-site GP surgery (AJ 30.05.14), subject to the anticipated expansion of its register. The first of these features is the absence of a coved skirting, the second the provision of a ventilation slot instead of a grille. Both contribute to the non-institutional character of the centre.

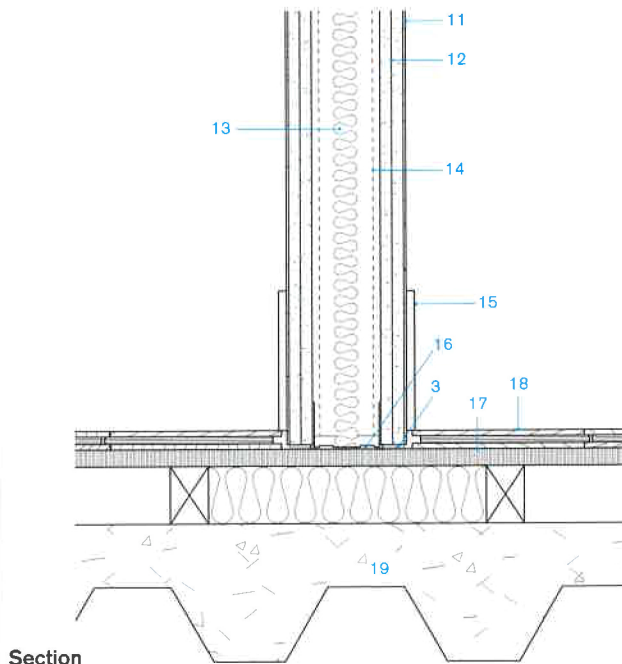
Although coved skirtings – a typical characteristic of hospital design, which is governed by prescriptive hygiene guidelines – are not mandatory in medical centres, other architects and clients might have chosen this option. Barbara Weiss Architects preferred simple, planted MDF skirtings, with engineered timber flooring tucked underneath, above a shallow raised floor which helps to maximise headroom.

The head detail allows the existing overhead slab to deflect with Gyproc Core Board sliding between the twin layers of Gyproc SoundBloc on each side of the partition.

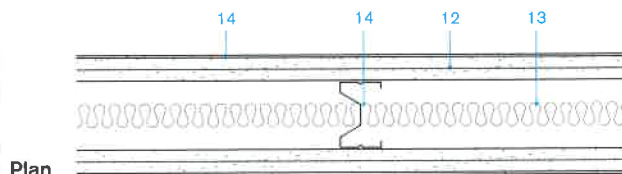


1. Insulation within floor profile
2. Gyproc FireStrip
3. Gyproc sealant
4. Gyproc CoreBoard
5. Top channel attached to fixing panel
6. Gypframe GFS1 fixing strap to horizontal joint
7. Gyproc Casoline ceiling system
8. FlowBar slot diffuser
9. Plaster finish
10. Plenum box and extract duct
11. Plaster skim coat
12. Two layer, 12.5mm Gyproc SoundBloc to each side of partition
13. Isover acoustic partition insulation
14. 70mm Gypframe AcouStud
15. MDF skirting
16. 72mm bottom channel fixed to raised floor
17. Raised floor
18. Engineered timber flooring
19. Floor structure

0 50mm



Section



Plan